

DesignWorks 2023  
Best In Show  
Credit One Stadium  
LS3P

**IIDA** | CAROLINAS  
chapter

# benefactor

## SHOWCASE

# THANK YOU

# 2024 BENEFACTORS

As the year draws to a close, we extend our deepest gratitude to our invaluable benefactors. Your unwavering support has been the driving force behind our successes this year. Through your generosity, we've been able to make a significant impact in the design community both at the city center level and campus center level. Your belief in our mission has not only elevated our organization but has also touched the lives of those we aim to support. As we reflect on the past year, we are filled with gratitude for the positive change we've been able to effect in the community. Thank for your unwavering commitment and partnership and now it is time to showcase each and every one of you!

DIAMOND  
PLATINUM  
GOLD  
SILVER  
COPPER  
BRONZE  
A&D

**diamond**

BENEFACTOR



## A TRUSTED NAME WITH A TRUSTED MISSION

Milliken is more than just a floor covering company—it's a team of devoted and experienced individuals dedicated to delivering high-performance floors that are beautifully designed without compromising your wellness. With a strong emphasis on innovation and sustainability, Milliken has set the standard for forward-thinking practices within the industry. Their unwavering commitment to excellence has made them a trusted name in the flooring industry.

When you choose Milliken, you're not just getting floors. You're getting a dedicated group of individuals who are passionate about their product and who are always improving. You're receiving reliable and trustworthy service. You're investing in floors that exceed average and break the mold of 'good enough.'



# YOUR COMPLETE FLOORING SOLUTION.

### THE CAROLINAS TEAM

Four dedicated individuals make up our Carolinas team. Full of passion and experience, this team is prepared to serve you and your project needs.



**DAVID POTTER**  
Senior Account Manager,  
Raleigh & Eastern North  
Carolina



**DAWN V**  
Senior Account Manager,  
Midlands & Low Country of  
South Carolina & Georgia



**MILLY CORT**  
Senior Account Manager,  
Charlotte & Triad/Western  
North Carolina



**SAMANTHA REYNOLDS**  
Account Manager, Charlotte  
& Upstate South Carolina

## BEGIN THE JOURNEY OF SUSTAINABLE FLOORING

The Collective Mind collection embodies a universal sense of comfort and visual intrigue. With a focus on texture and organic surfaces, this collection is a continuation of Milliken's steadfast environmental stewardship. Classics are made new in 4 distinctive patterns and 24 colors, bringing forth a revitalized vintage sensibility,



COLLECTIVE MIND



FIRST SIGHT

## ELEVATE THE TACTILE APPEAL OF YOUR FLOORSCAPES

First Sight highlights the interplay between land and sea, capturing the moment when first light breaks on tranquil water. Subtle textures distinguish two organic patterns, providing the power to bridge spaces and define zones, and 14 neutral colors usher in serene floorscapes across a versatile range of spaces. Utilizing regenerated nylon, this product embodies Milliken's steadfast commitment to sustainable design.

# Product *Spotlight*



**A FLOORING REVOLUTION:**

# Pioneering the Way for PVC-free Flooring

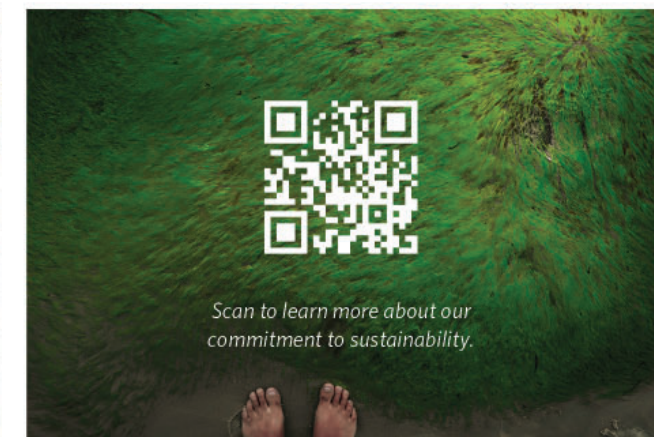


Healthy materials are the foundation for effective circularity, reducing community pollution and cleaner living for all.

The Living Building Challenge *Red List* contains “worst in class” materials, chemicals, and elements known to pose serious risks to human health and the greater ecosystem. *Red List Free* certification is the absence of Red List chemicals in building and home furnishings. Our products have been *completely vetted and verified* to contain **no** Red List chemicals at levels at or above 100 ppm or 0.01 percent. In 2023, we introduced our first PVC-free

Resilient floor—Merge Forward. Now in 2024, we have introduced our second collection Mesa. Merge Forward and Mesa are the frontrunners for PVC-free resilient floors, offering superior scuff and stain resistance with ambient noise control without compromising your health.

Achieving LBC Red List Free in our flooring is a commitment to significantly cut down on the output and use of harmful chemicals. It reflects our company’s prioritization on human health ensuring a brighter future for generations to come.



Scan to learn more about our commitment to sustainability.

# platinum

## BENEFACTOR



—  
**meet  
the team**

discover your local rep /



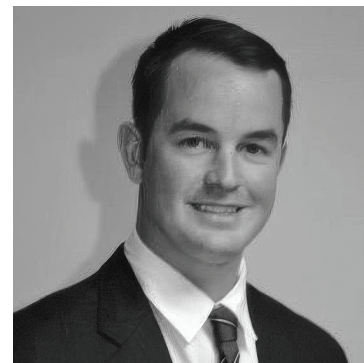
**Amy Sprules**

—  
Account Manager  
amy.sprules@patcraft.com  
704-774-9009



**Sean Nguyen**

—  
Account Manager  
sean.nguyen@patcraft.com  
910-620-5208



**Luke Stoiber**

—  
Account Manager  
luke.stoiber@patcraft.com  
980-257-3690



**Morgan Helms**

—  
Account Manager  
morgan.helms@patcraft.com  
919-819-0943



**Maria Kebschull**

—  
Account Manager  
maria.kebschull@patcraft.com  
919-920-8631



**Stephanie Grigston**

—  
Account Manager  
stephanie.grigston@patcraft.com  
336-596-7326







LITHIC / neolith in color berara



LITHIC / alt rock in color buonanotte



Derrington Dermatology and Spa-Keen Designed by The Middleton Group  
**METAL COLLECTIVE** / oxidized / color 00530 sandstone / installed in monolithic



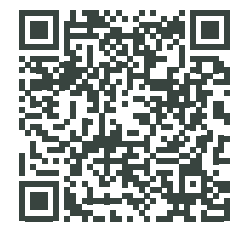
**DECONSTRUCTED FORM** / graphic arc in color geo & angle installed in brick  
/ texture arc in color point & angle installed in brick & stagger

# SPARTAN SURFACES



Hi there! We're Spartan Surfaces, a commercial flooring company operating nationally, with local reps whose entire job is to make your life easier. With a plethora of product and material options, thousands of success stories, and nearly two decades of expertise, we can confidently say that no matter the project, we've got you covered.

**CHECK OUT OUR LOCAL PRODUCT OFFERING!**



## MEET OUR LOCAL TEAM

**SHAWN**

Campbell

c. 919.345.7230

e. [scampbell@spartansurfaces.com](mailto:scampbell@spartansurfaces.com)



**JR**

Foster

c. 803.509.3946

e. [jfoster@spartansurfaces.com](mailto:jfoster@spartansurfaces.com)



**LAUREN**

Panella

c. 919.219.7877

e. [lpabella@spartansurfaces.com](mailto:lpabella@spartansurfaces.com)



**DOM**

Drinan

c. 410.322.7625

e. [ddrinan@spartansurfaces.com](mailto:ddrinan@spartansurfaces.com)



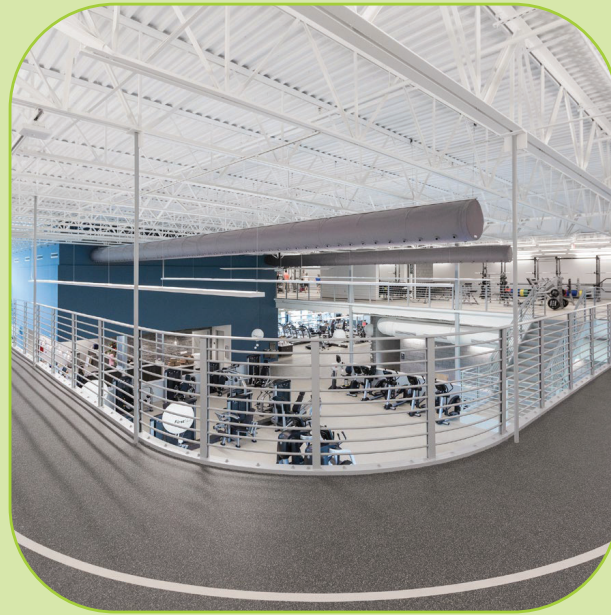
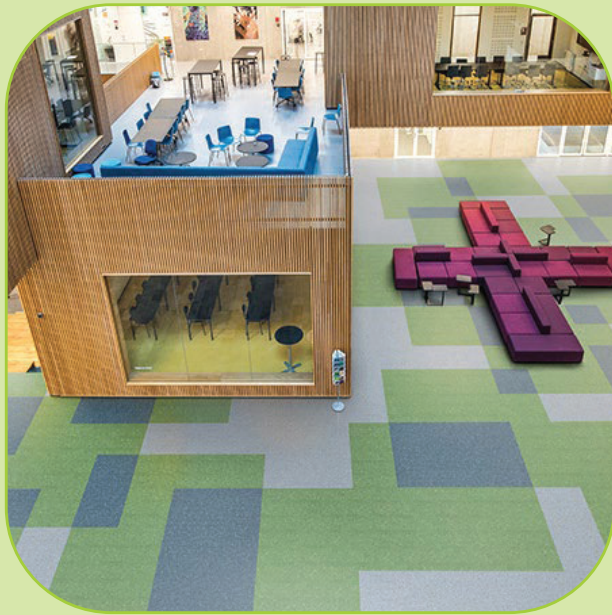
SPARTANSURFACES.COM



@SPARTANSURFACES



800.997.7604

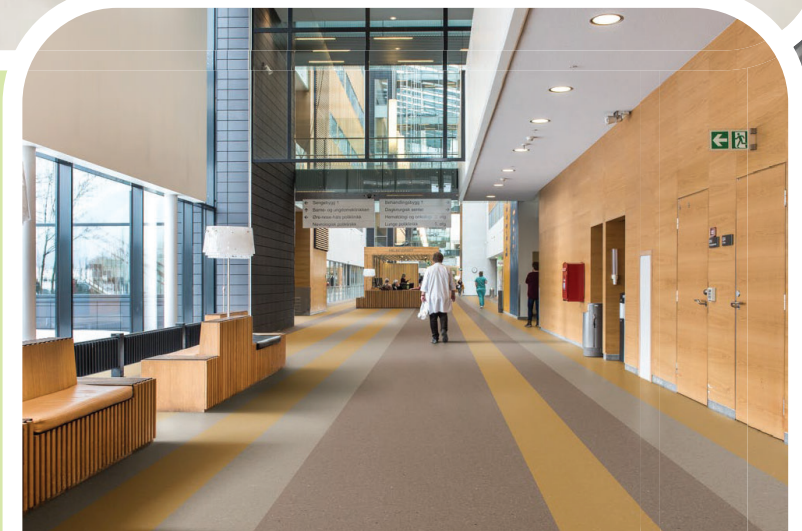
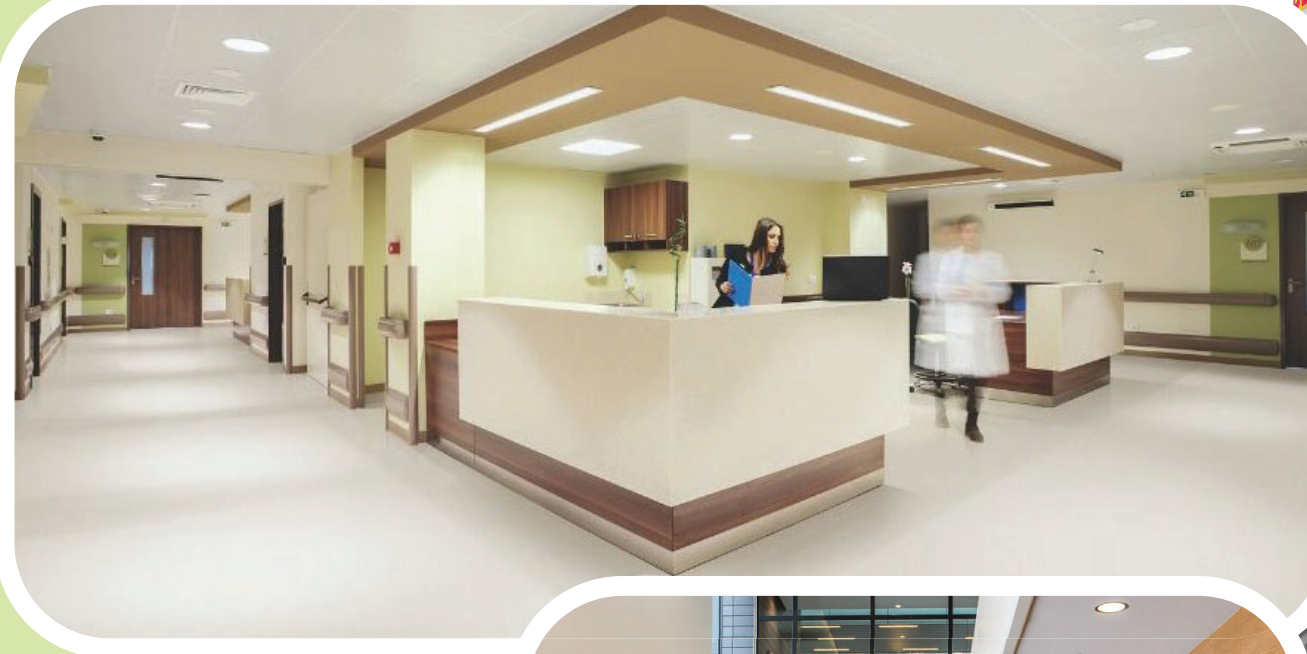
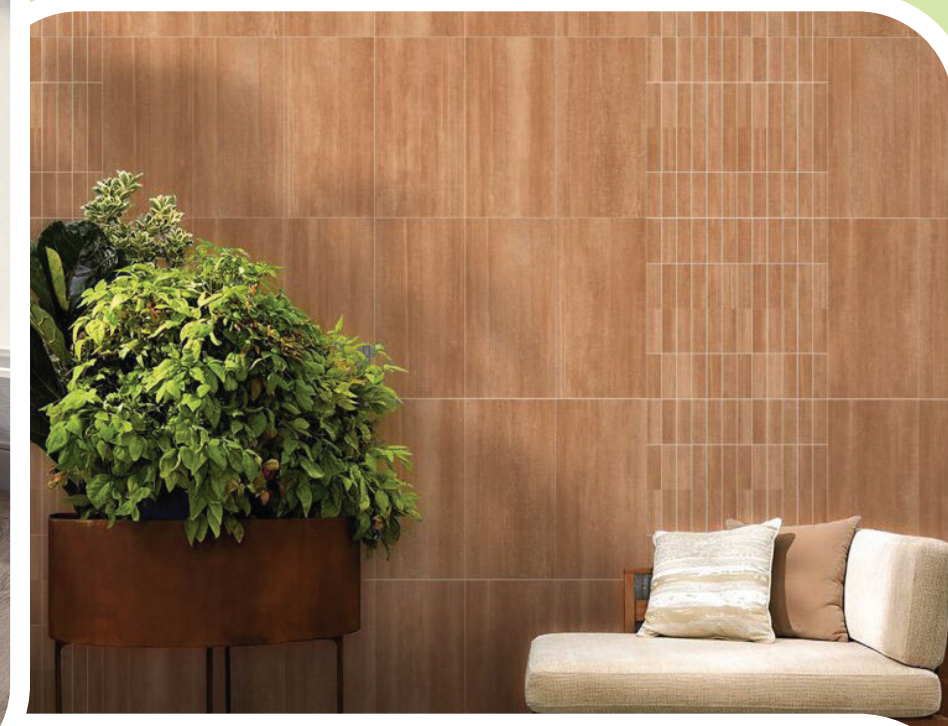


Spartan aims to bring innovation and ease to the forefront of every project. We know how much work goes into every aspect of the design process - our job is to make your job a little easier, and we take it very seriously. With our expertise and carefully selected variety of surface products, we aim to be your one-stop-shop for not only flooring and wall, but also knowledge. From material and product selection to installation and maintenance, we know our stuff and we're only a phone call away. Whatever you need, we've got you covered.

**SEE OUR PRODUCTS IN ACTION LOCALLY!**



# TAKE A GANDER AT SOME OF OUR FLOORING FAVES



Pictured:  
Ecosurfaces  
Cobalt Katanga  
Kahrs Commercial Upofloor  
UMORE Floor & Wall Tile



# Elevate Your Experience

For over 157 years, our business has expanded by building partnerships as our #1 priority. We provide insight to define your needs, knowledge-based design to achieve your purpose, and customer care to deliver unparalleled results.

Alfred Williams  
& Company 



Alfred Williams & Company is your MillerKnoll platinum level dealer and premier DIRT T partner for the Carolinas.

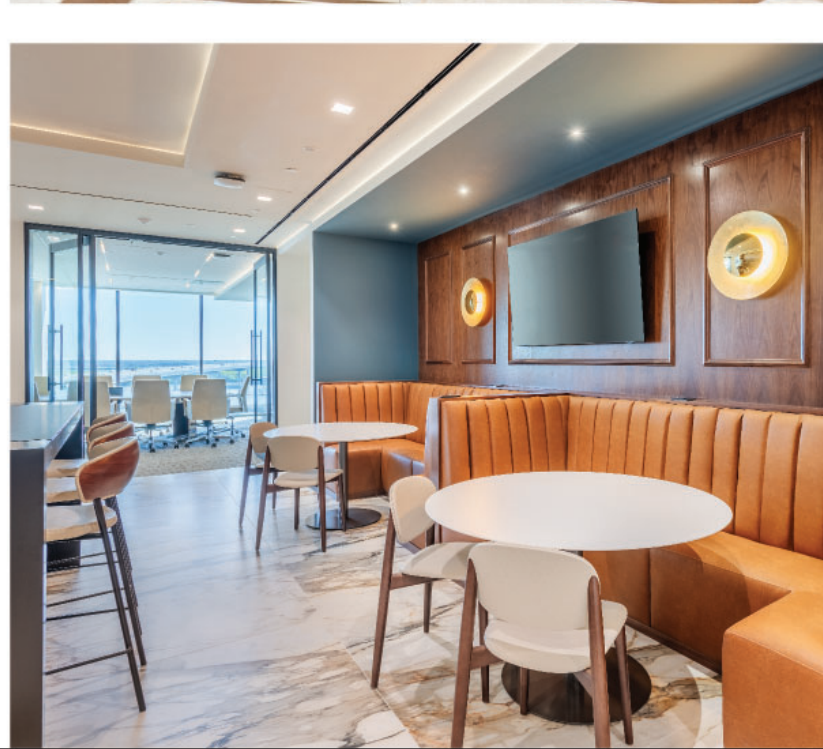


MillerKnoll  
CERTIFIED DEALER

DIRTT®  
CONSTRUCTION PARTNER

Scan QR code  
to learn more!







# E | Interior Elements

Shaping spaces where  
**people** connect:

Modern design for today's  
workplace culture

Love Your Space

[in-elements.com](http://in-elements.com)

# E | Interior Elements

We proudly partner  
with industry leading  
manufacturers:

Our vast array of manufacturing partners gives us  
nearly limitless options when it comes to specifying  
carefully curated products for your project.

Allsteel

Gunlocke®

HBF  
TEXTILES

zilenziO

normann  
COPENHAGEN

CORRAL



Kimball International

formfurniture

[in-elements.com](http://in-elements.com)

# E | Interior Elements

We focus on **people**  
and **culture**

and how the space around us  
effects that culture

learn more



in-elements.com

Love Your Space

# J+J FLOORING



RHYTHM + BALANCE // MODULAR



STEP BY STEP // LVT



SOJOURN // MODULAR + BROADLOOM



## TIM BAUCOM

Triad, Triangle, Sandhills and Coast of NC

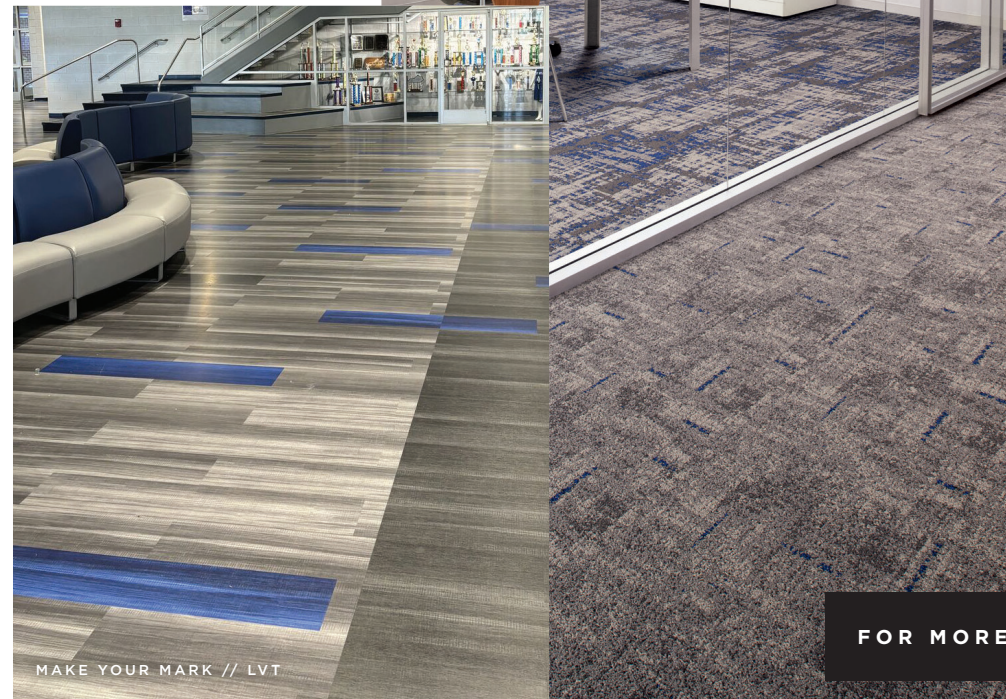
Tim.Baucum@jjflooring.com



ADVANCE + ADJUST + ADAPT // MODULAR



SOUNDTRACK // KINETEX RALEIGH DURHAM AIRPORT



MAKE YOUR MARK // LVT

QUILL + TABBY // MODULAR



## CRAIG HAUSER

Charlotte

Craig.Hauser@jjflooring.com



## JASON BEAMER

Charlotte

Jason.Beamer@jjflooring.com

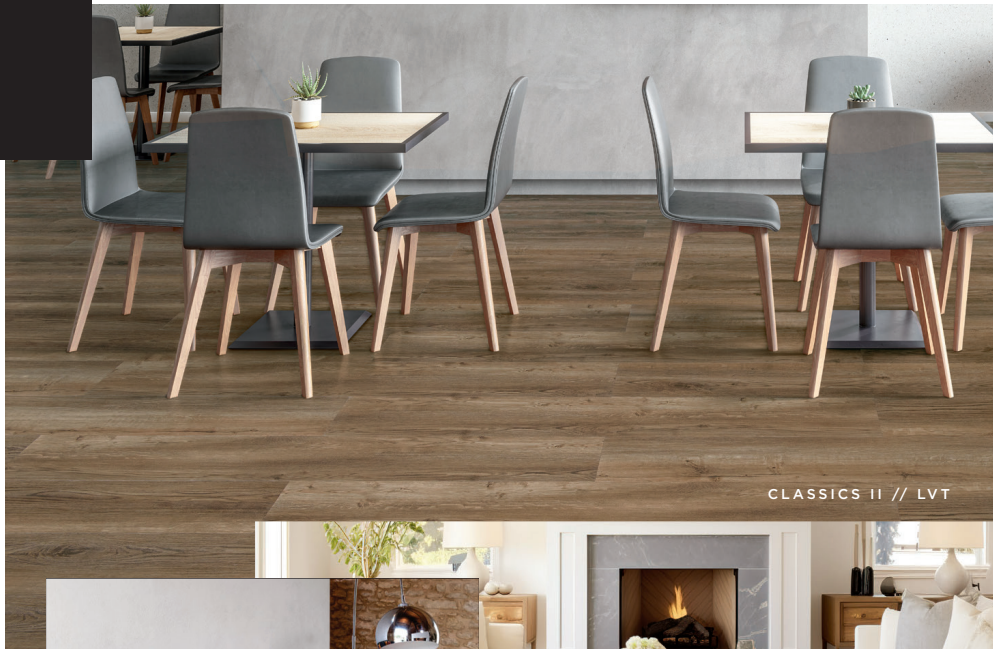
FOR MORE INFO VISIT JJFLOORING.COM



DAVID BALDERSON

Columbia, Charleston, Savannah, Augusta, Myrtle Beach

David.Balderson@jfflooring.com



CLASSICS II // LVT



STOCK RUG 100



BLISS + HARMONY // MODULAR + BROADLOOM

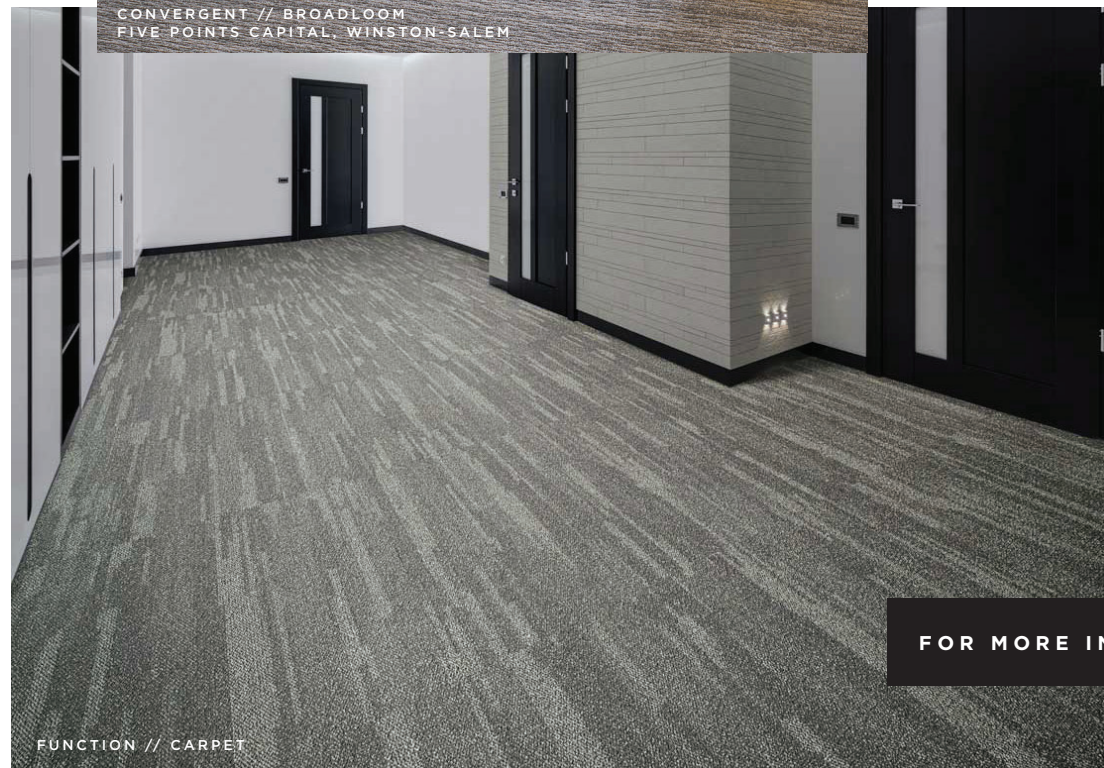


DIGITAL // KINETEX



PUT A CORK IN IT // KINETEX MEDICAL UNIVERSITY OF SOUTH CAROLINA

CONVERGENT // BROADLOOM FIVE POINTS CAPITAL, WINSTON-SALEM



FUNCTION // CARPET



GLEND A CORDRAY

Upstate SC, Western NC, and Tri Cities TN

Glenda.Cordray@jfflooring.com

FOR MORE INFO VISIT JFFLOORING.COM

**Mannington**.<sup>®</sup>  
C O M M E R C I A L

# Meet Our Team

The Mohawk Group Carolinas team is proud of our long-term participation with the IIDA Carolinas chapter, and we appreciate the support of our friends and colleagues. Our job is to be your valued and trusted flooring resource and ensure the total success of your project. We look forward to another great year and effectively serving your needs.



**Rene Haithcox**  
Raleigh, Durham, RTP



**Lori Zeto**  
Raleigh



**Mike Hamer**  
Charlotte Metro



**Jeff Weddine**  
Charlotte Metro



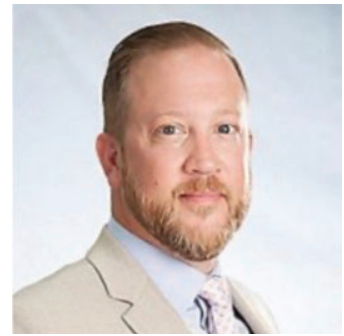
**Elizabeth Johnson**  
South Carolina



**Randall Sanders**  
S. Carolina & Augusta



**Dustin Webb**  
Charlotte Metro



**Kenny Smith**  
Eastern North Carolina



## Hot and Heavy II

Elevate your designs with Hot & Heavy II Bolder 2.5 or Bolder 5.0 18"x 36" tiles. Available in two thicknesses, the tiles offer concrete and metallic visuals in a range of neutral colors, from soft greys and taupes to deep charcoals. Also in the collection is Secoya 2.5 | 5.0 available in two versatile thicknesses and plank sizes, this rich wood-grain LVT offers a stunning array of color tones. With serene hues of light oak to the luxurious depths of amber maple, these styles bring natural beauty and elegance to every space.



## Pathmakers

With Pathmakers, we drew inspiration from bees, whose paths of pollination help sustain all life. Influenced by hive structures and the daily journeys of bees, Pathmakers carpet planks are designed to support multifaceted communities, utilizing materials and methods that do more to care for our planet. The collection creates nurturing paths of connection between people, the built environment and our natural world. For the two styles in this book, Concrete Bloom and Pollinator Path, we look to beehives to help us build a culture of care in active spaces.



## Wild Horizons

The Wild Horizons carpet tile collection draws inspiration from the rich tapestry of biodiversity found in wildflower meadows, with accent colors reflecting the vibrant hues of native wildflowers. The pattern's design captures the organic textures reminiscent of untouched landscapes, inviting users to experience the untamed beauty within interior spaces. Wild Horizons embodies the essence of Ungardening, the rewilding practice of allowing wildflowers to grow uninhibited instead of in a controlled garden, fostering a connection to the wild while promoting sustainability and biophilic design.





Our future depends on the work we do today. At Mohawk Group, commitment to our planet extends beyond just products and processes: it's how we challenge ourselves to do and be better every day, how we make decisions, how we reinvest in our people and our planet, and how we define what matters most as we work to deliver value for generations to come.

**Carbon Solutions**

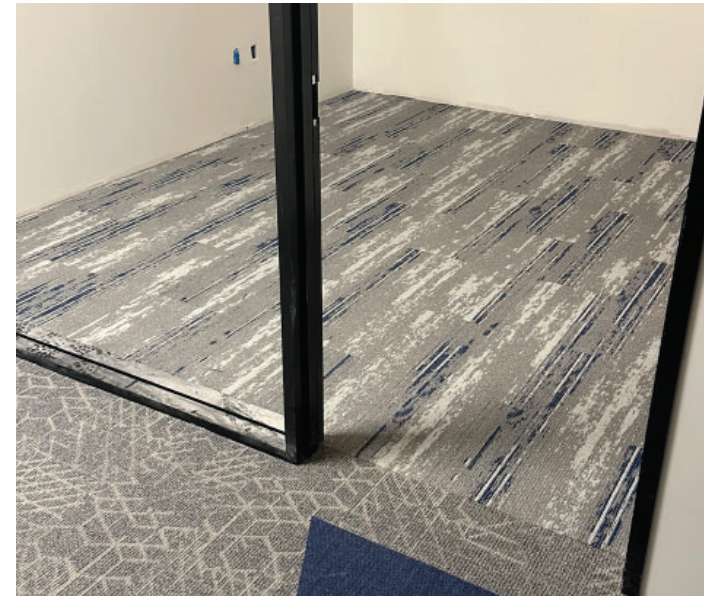
All our products are Beyond Carbon Neutral, meaning that Mohawk Group and Durkan Hospitality achieves a net-zero impact in carbon and water, plus an additional 5%. This results in an overall positive economical impact.

**Water Innovation**

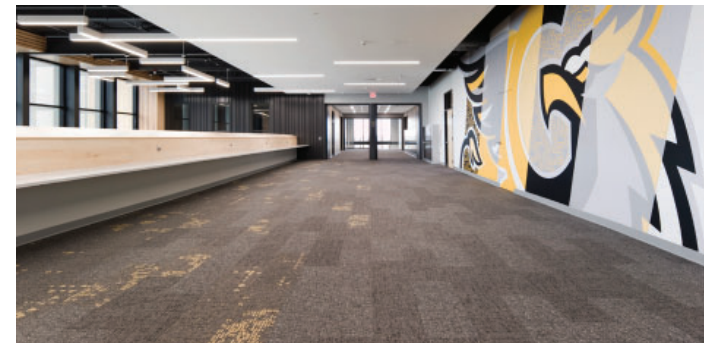
We continue to work toward our goal to reduce water use intensity and remain committed to find improvements to ensure water conservation. In 2021, we restored 8 million gallons of water thanks to our Waterways Project collections.

**Handprinting Impacts**

We recycle 6 billion plastic bottles annually in fiber production and, depending on project location, Mohawk will take and recycle any carpet through our North American network of carpet recyclers through our ReCover Program.



**Gretna East High School**  
RELAXING FLOORS



**KCI - Raleigh**

CHROMATIC CADENCE, ANGLED PERCEPTION, DISRUPTIVE PATH





Campers  
& dens.  
by Orangebox

Inspired by the intuitive ways people interact and socialize at campgrounds, Campers & Dens was designed to create layers of privacy that support

## Joy at Work

Yes, it's possible.

Is joy at work really possible? Yes it is and in this issue of Work Better we're sharing ideas about how to create spaces that help spark joy.



Get your copy  
Request your free  
print copy of  
Work Better magazine  
or download it now.

## A Net-Zero Future Needs Us All

Our work, together with our suppliers, customers and peers, is to help keep the global temperature from rising and work to reduce the impacts of climate change.

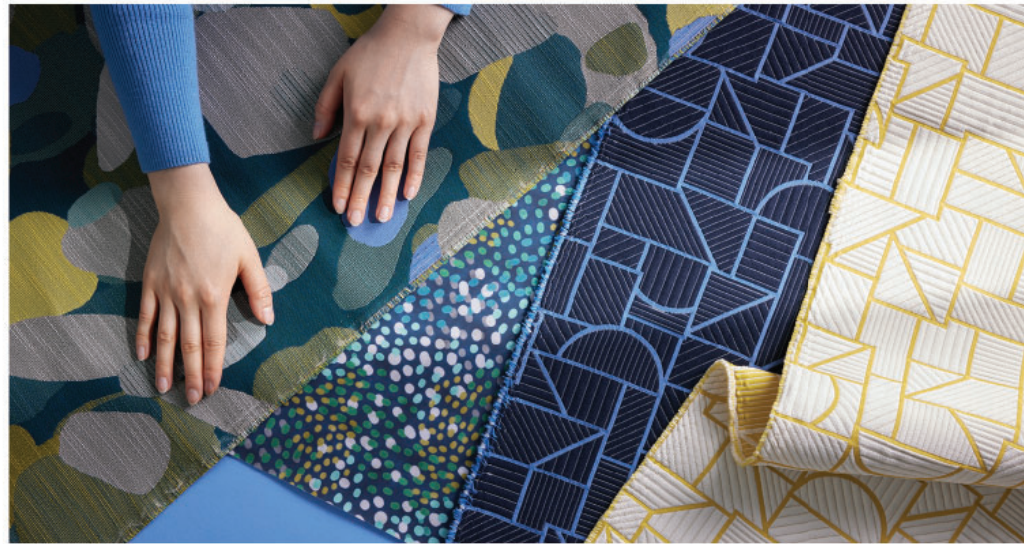


Read our net-zero  
transition plan:  
"The Power  
of Possibility".



**Steelcase**<sup>®</sup>





Designtex is a  
PFAS-free  
Company



**Alison DiMola**  
Representative  
NC – except Charlotte, Asheville  
SoVA – including Roanoke, Richmond, Norfolk

336.543.5437 Mobile  
800.221.1540 Main  
adimola@designtex.com



**Alicia Denton**  
Representative  
South Carolina / Asheville, NC/  
Charlotte, NC / Savannah, GA

404.216.3967 Mobile  
800.221.1540 Main  
adenton@designtex.com



BONITZ

DALTILE

EF CONTRACT | KIBA

OFFICEWORKS

PORCELANOSA

SHAW CONTRACT

TARKETT

TEKNION + STUDIO TK

UNIQUE CONCEPTS

YOUNG OFFICE

# silver

## BENEFACTOR



# YOUR BONITZ TEAM



**KAILEE BENNICE**

*Design & Project Specialist*  
Raleigh, NC  
KaileeBennice@Bonitz.com



**LINDSEY SCHMIDT**

*Design & Project Specialist*  
Charlotte, NC  
LindseySchmidt@Bonitz.com



**SCOTT CORNATZER**

*Business Development*  
Winston-Salem, NC  
ScottCornatzer@Bonitz.com



**KRISTIN SULLIVAN**

*Design & Project Specialist*  
Columbia, SC  
KristinSullivan@Bonitz.com



**KARLA TOWE**

*Director of Sales*  
Charleston, SC  
KarlaTowe@Bonitz.com



**TANYA JONES**

*Regional Director of Sales*  
Greenville, SC  
TanyaJones@Bonitz.com

SPECIALTY TRADE COMMERCIAL CONTRACTORS



**SINCE 1954**



**FLOORING, CEILINGS, WALLS, TERRAZZO, RESINOUS FLOORING, RAISED ACCESS, SPORTS FLOORING, ACOUSTIC SOLUTIONS, FLOORCARE, EPOXY, CLADDING & RAINSCREENS**

# Our Team

Charlotte  
Winston Salem  
jonathan.studios@daltile.com



Jonathan

Greenville  
katieberry@daltile.com



Katie

Raleigh  
Greensboro  
michele.miller@daltile.com



Michele



Charleston  
Columbia  
lauren.taylor@daltile.com



Lauren

Myrtle Beach  
Wilmington  
chae.richardsong@daltile.com



Chae



Floor & Wall Tile

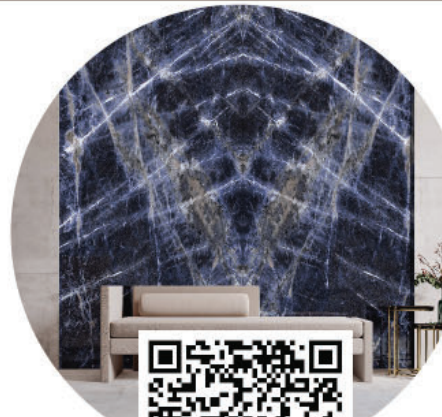
LVT

Quartz Slab

Porcelain Slab

2cm Pavers

Natural Stone



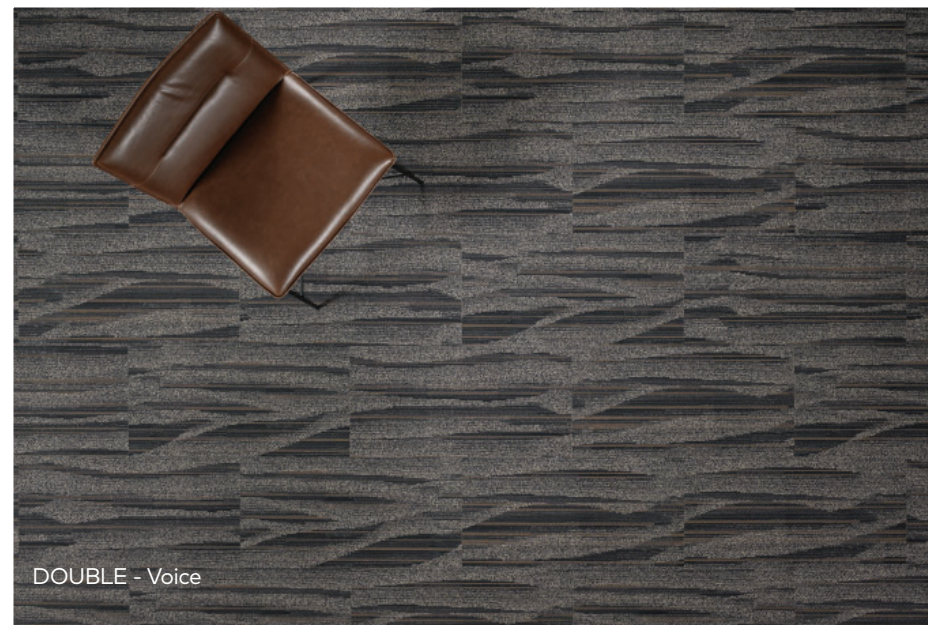




**EF Contract**

Coming Soon: *High Society*

Part of the fastest-growing, most progressive family of flooring companies, EF Contract stands for confidence in quality, relentless service and doing right by all.



DOUBLE - Voice



DUAL- Exterior | DOUBLE - Melody

**kinetex<sup>®</sup>**



SOUND - Static | SURFACE - Aspect

Created as a unique floor covering alternative to hard-surface products, EF Contract's Kinetex encompasses an unprecedented range of performance attributes for retail, healthcare, education and institutional environments.

**EF Contract**



**KING BOSTROM**  
Triad/Triangle

# KIBA

Our mission is to be the Designer's first choice and trusted resource.



**ANGIE BOSTROM**  
Triad/Triangle



**CARLIE LOVE**  
Eastern NC



**KELSEY BIXLER**  
Charlotte/ Western NC



**THOMAS DOMINICK**  
SC



SURFACE- Exterior + Aspect  
kinetex



MELANGE  
LVT



KIMONO - Green Tea  
Carpet tile

Each collection, pattern and colorway is created with best-in-class performance and in pursuit of design that is simply beautiful.

## About Us

Officeworks opened its first location in Burlington, MA, in 1995 and quickly established itself as a valued Teknion dealer. With a commitment to providing stunning spaces and superior service, Officeworks has grown to 11 locations throughout the East Coast, including our newest location in Raleigh, NC.



FURNITURE



ARCHITECTURAL  
INTERIORS



PROJECT  
MANAGEMENT



SPACE  
PLANNING



DESIGN



DELIVERY &  
INSTALLATION

*learn more*  
----->





## MEET OUR TEAM CHARLOTTE + RALEIGH



Karen Dann

Managing Director  
Officeworks NC

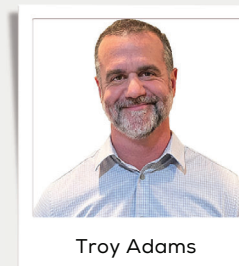


Brett Frenier

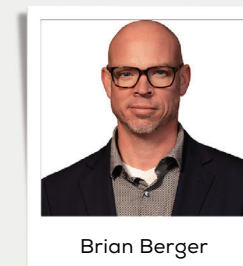
SVP, Business Development  
Officeworks Raleigh



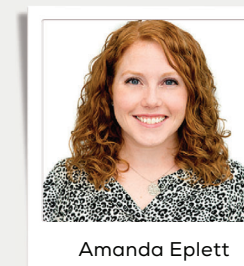
*let's connect!*



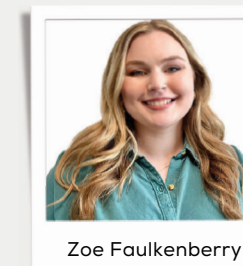
Troy Adams



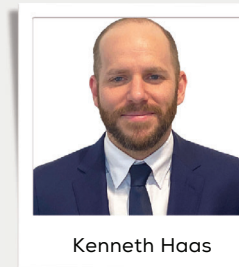
Brian Berger



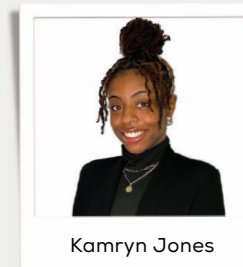
Amanda Eplett



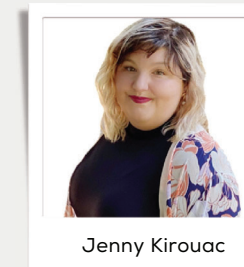
Zoe Faulkenberry



Kenneth Haas



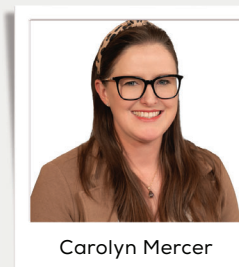
Kamryn Jones



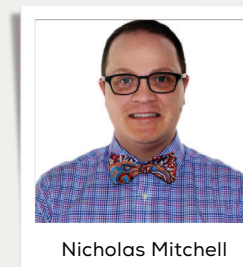
Jenny Kirouac



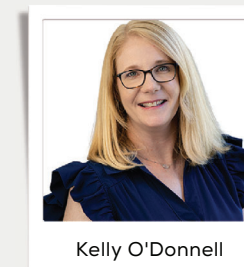
Claire LaMontagne



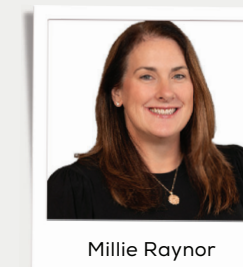
Carolyn Mercer



Nicholas Mitchell



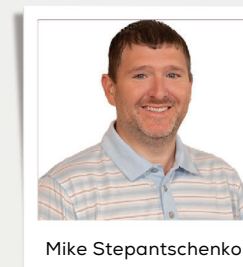
Kelly O'Donnell



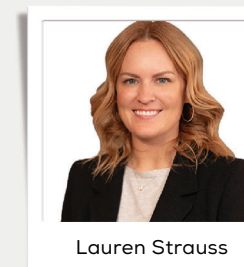
Millie Raynor



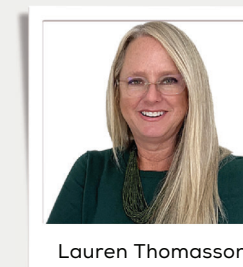
Stacy Schipani-Boyce



Mike Stepantschenko



Lauren Strauss



Lauren Thomasson



# PORCELANOSA

TILES · BATHROOMS · KITCHENS



Mark Valenti  
Sales Manager



Christy McCormick  
Architectural &  
Design Account  
Executive



Allison Randleman  
Outside Sales Rep



Justin Gray  
Design Consultant

## Porcelanosa Charlotte

1231 East Blvd, Suite B  
Charlotte, NC 28203  
704-500-0910



Visit our website

[www.porcelanosa.com/us](http://www.porcelanosa.com/us)

PORCELANOSA Group is a global leader in providing **high-quality architectural and design solutions** for commercial interiors. Our extensive product range includes **premium ceramic surfaces, custom kitchen and bathroom furniture, and advanced architectural systems**, from **innovative façade solutions** to state-of-the-art materials for tile installation, all designed to meet the demands of large-scale projects.

## Since 1973

DESIGNING UNFORGETTABLE MOMENTS

## What we offer

WHAT WE OFFER

Tile  
Bath  
Stone  
Kitchens  
Mosaics  
Wallpaper

XTONE  
Laminate  
Hardwood  
Luxury Vinyl Tile  
Krion™



PORCELANOSA  
TILES · BATHROOMS · KITCHENS



## Art Meets Science: A Continual Loop From Past to Present

Introducing *Art + Science*: a revolutionary PVC-free resilient, changing the way we think about hard surface performance and circularity.

Born from EcoWorx® carpet tile backing, an idea we first launched 25 years ago, *Art + Science* collection, our first PVC free, fully recyclable EcoWorx™ Resilient. As sustainable as it is beautiful and designed for performance in all commercial spaces.

*Art + Science* – a cycle completing itself

**ShawContract®**



# Shaw Contract Carolinas Associates:



**Jeannine Hill**  
*Upstate South Carolina  
& Western North Carolina*



**Steven Davitte**  
*Midlands South Carolina*



**Wesley Hagan**  
*Coastal South Carolina*



**Kerry Withers**  
*Greensboro, High Point  
& Winston-Salem*



**Mari Howard**  
*Eastern and Coastal North Carolina*



**Michelle Parrish**  
*Central North Carolina*



**Joe Hill**  
*Charlotte, North Carolina*



**Tripp Chinn**  
*Raleigh, Durham & Chapel Hill*



**Sophie Wiley**  
*Upstate South Carolina, Asheville,  
Charlotte & Triad*



**Dawn Van Dyke**  
*Charlotte, North Carolina*



**Frank Grindle**  
*Charlotte, North Carolina*



**Michelle Hodges**  
*Charlotte, North Carolina*



**ShawContract**

# The floor is yours

Thank you for your commitment to not only creating beautiful interiors, but designing thoughtful environments where we all live, work, grow, and connect. Your vision and creativity bring life to our communities, and we're honored to support you every step of the way.

Tell us your vision, ask us your questions, or let us know how we can make your experience better. Whatever you need, we're here to listen and to partner with you in great design, done responsibly.

Creatively yours,  
**The Tarkett Carolinas Team**

## Meet our Carolinas team



**Kim Hogan**  
Regional Vice President  
North Carolina | South Carolina



**Frank Wiseman**  
Global Account Executive



**John Spires**  
Resilient Business Manager  
North Carolina | South Carolina



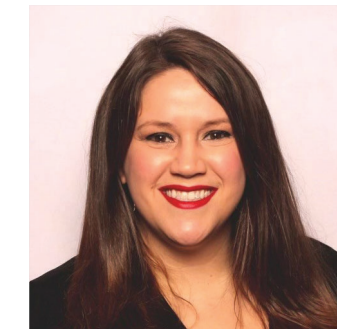
**Tommy Kerr**  
Account Executive  
Triad | Western North Carolina



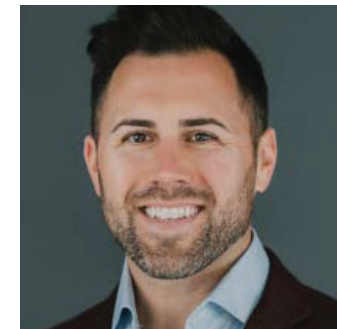
**Stephanie Harris**  
Account Executive  
Raleigh | Durham | RTP



**Lisa Ellis**  
Account Executive  
Eastern | Coastal North Carolina



**Kimberly Gray Trimble**  
Account Executive  
South Carolina



**Scott McSherry**  
Hospitality Account Executive  
North Carolina | South Carolina



Transcend Edit 11816 Hush 56407 | 24" x 24" vertical ashlar installation  
Transmute Edit 11817 Hush 56407 | 24" x 24" vertical ashlar installation



# Every step matters

Tarkett’s holistic approach to sustainability is woven into the fabric of how we do business and sits at the heart of our day-to-day decision making.

For decades, we’ve been scrutinizing every detail of our business for its impact on resources like soil, air, and water—because when you’re trailblazing a more sustainable future, **every step matters**.

These three values help us stay the course when it comes to sustainability.



Transparency you can trust



Circular economy



Healthy impacts



# Tarkett Solution SPECtrum™

At Tarkett, we believe in placing people in the center of every space. So we’ve developed a portfolio of products designed to work together both functionally and aesthetically, helping you create more supportive spaces that maximize return on investment. Our full palette of colors, patterns, and textures is coordinated to work together visually across product categories—creating the perfect balance for people, planet, and performance.



1. Johnsonite® rubber tile  
**Minerality** PB7 Barnwood
2. Carpet tile  
**Transpire Edit 11818** Allusive 56406
3. Carpet tile  
**Transmute Edit 11817** Hush 56407
4. Johnsonite rubber tile  
**Color Splash** VE8 Sandstorm
5. Johnsonite wall base  
**Millwork Reveal®** MW-469-F Mystify
6. Johnsonite wall base  
**Millwork Mandalay** MW-281-H Grizzly
7. Luxury vinyl tile  
**Even Plane Cement** PNS Light Grey 8703
8. Luxury vinyl tile  
**Event® Crafted Plank PECF** Seasonal Oak 11209
9. Luxury vinyl tile  
**Event® Texterran PETE** Ecrú 11193



Color may vary from actual swatch. To order a sample and to learn more, please visit [tarkett.com](https://www.tarkett.com).



# Teknion Family of Brands

We invite you to learn more about Teknion's family of brands and how good design and partnership can provide inspiration, creativity and innovation.

teknion

Private + Open offices  
Ergonomic Solutions  
Seating  
Technology Support Training  
Conference  
Reception  
Social Spaces

studio 

Seating  
Tables  
Screens  
Accessories  
Social, Collaborative  
Culture Hub

LUUM

The LUUM Textiles  
Portfolio includes  
22 Fabric Collections

Scan to Learn  
More About Teknion





## Kelly Adesso

Business Development Manager  
Charlotte, NC and South Carolina

[kelly.addesso@teknion.com](mailto:kelly.addesso@teknion.com)

757.407.2592

teknion







# CUSTOM COMMERCIAL FURNITURE FURNITURE TO FIT YOUR WORK SPACE

Unique Concepts is a custom contract furniture manufacturer based in the state renowned for its furniture industry: North Carolina. Since 1994, we have been creating top-quality, built-to-order furniture for the business market.



We're best known for our conference tables and unique reception desks, but we are certainly not limited to those. Our work can be seen in places as diverse as orthodontists' offices, public relations firms, major universities, state tourism and convention centers – and even the Pentagon in Washington, DC!



485 Old Wilson Rd  
Wendell, NC 27591

919-366-2001

[uniqueconcepts.com](http://uniqueconcepts.com)



485 Old Wilson Rd  
Wendell, NC 27591

919-366-2001

[uniqueconcepts.com](http://uniqueconcepts.com)

DESIGN

FURNITURE

FLOORING

MODULAR WALLS

TECHNOLOGY

PM + INSTALL



VIEW SERVICES

INTERIOR INTEGRATION

Young Office is a full-service interior integrator and workplace solutions provider. We create spaces that inspire, motivate and engage, and believe the physical environment has incredible power, influencing the behavior, productivity, wellbeing and creativity of people.

Connect with us!



**JENNIFER MCALISTER**  
 Market Development Manager  
 jmcalker@youngoffice.com  
 864.444.7647

**WILL CANNON**  
 Market Development Manager  
 wcannon@youngoffice.com  
 843.494.4251

## Project Highlights



**PINNACLE FINANCIAL PARTNERS**  
 Charleston, SC



WATCH VIDEO



**DAVIS + FLOYD**  
 Charleston, SC + More



FULL STORY / VIDEO



**ELDECO**  
 Greenville, SC



VIEW PHOTOS



**FOUNTAIN INN HS**  
 Fountain Inn, SC



VIEW PHOTOS



**EBCI - TRIBAL FOODS**  
 Cherokee, NC



VIEW PHOTOS

7 Locations

- Asheville
- Spartanburg
- Greenville
- Columbia
- Charleston
- Savannah
- Augusta

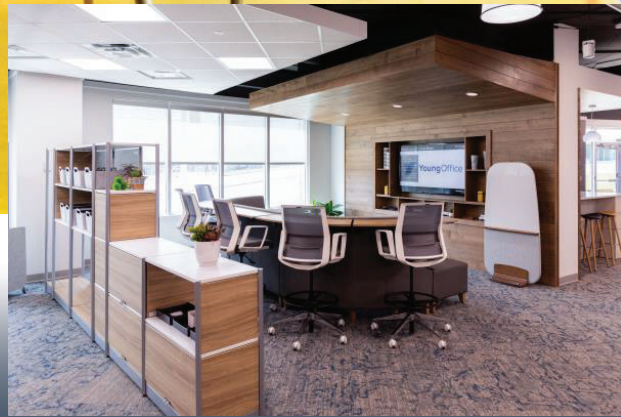


70 Years

110 Employees

Steelcase®  
 2022 Premier Partner

View more project highlights at:  
[youngoffice.com/customer-photos](http://youngoffice.com/customer-photos)



**YOUNG OFFICE**  
Spartanburg, SC



**PROTERRA**  
Greenville, SC



DAN LURIE ASSOCIATES, INC.  
DARRAN FURNITURE  
DAVIS FURNITURE  
STORR OFFICE ENVIRONMENTS

# copper

## BENEFACTOR



## DAN LURIE ASSOCIATES

COMMERCIAL DESIGN MADE EASY  
CONTACT US TODAY AND SEE WHAT WE CAN  
DO FOR YOU

FACEBOOK: @DANLURIEASSOCIATES  
INSTAGRAM: @DANLURIEASSOCIATES  
LINKEDIN: @DANLURIE



DARRAN®

scan QR code for all products

# TCG

## The Contract Group

*Contract Furniture Representatives*



Skip Dunaway / Sales



fion



six-t occasional



six-t conference



liaison



abacus



plus modular



teo



plus



heartfelt



uplift



daydream



spool

DAVIS design  
is a  
choice



Scott Miller Associates  
North + South Carolina Sales Representatives



Arcular Chair by LucidiPevere  
Vida Shelving by Hanne Willmann



SAFEChild - Gensler - 2023



ChannelAdvisor - Little - 2023

# StorrOffice

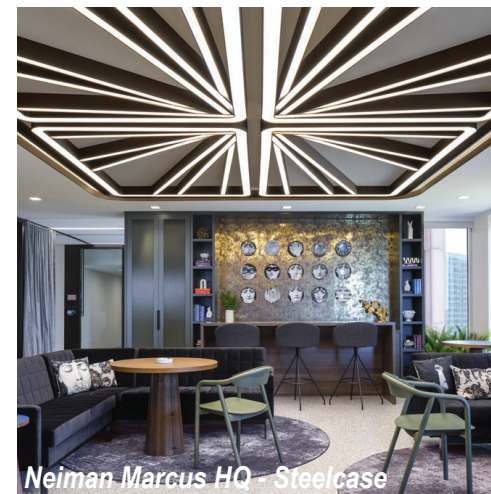
Your Partner in Design



SAFEChild - Gensler - 2023



ChannelAdvisor - Little - 2023



Neiman Marcus HQ - Steelcase



Mooui - 2024



# bronze

## BENEFACTOR

ALLSTEEL  
ARCHITEX  
BENTLEY MILLS  
BEST TILE  
BODWELL ASSOCIATES  
COSENTINO  
CROSSVILLE STUDIOS  
DSC GROUP  
GERFLOR USA  
INFINIUM WALL SYSTEMS INC. | URBAN OFFICE  
INTERFACE + NORA RUBBER  
JACK FETNER ASSOCIATES - OFS  
MDC INTERIOR SOLUTIONS  
MECHO SHADE + SWF CONTRACT  
MOMENTUM TEXTILES & WALLCOVERINGS  
MRG SOUTHEAST  
RELIALEX, INC.  
ROPPE  
SHERWIN-WILLIAMS  
SMITH & STEVENSON  
THE CONTRACT GROUP  
TILEBAR

Designed  
to do more.



Allsteel®



Check out our  
Fall 2024 Issue  
of More Magazine

Architex®



**SCREEN DOOR™  
COLLECTION**

**BENTLEY®**  
BENTLEYMILLS.COM

For more than 45 years, Bentley Mills, Inc. has defined design, color, quality, and customer service in the commercial carpet industry. With luxury, timelessness, and crafted quality at the forefront of our product design, Bentley is dedicated to achieving our highest potential in responsibility—minimizing our footprint while maximizing our positive impact on the environment and in society.

For more information, please visit us at [bentleymills.com](http://bentleymills.com) or contact a Carolinas Account Executive today.



**OUR CAROLINAS SALES TEAM**



**JULIE KINNAVY**  
CHARLOTTE METRO AND  
WESTERN NC

704.999.5467  
[JULIE.KINNAVY@BENTLEYMILLS.COM](mailto:JULIE.KINNAVY@BENTLEYMILLS.COM)



**CHRISTY BENNETT**  
TRIAD, TRIANGLE AND  
EASTERN NC

336.676.2935  
[CHRISTY.BENNETT@BENTLEYMILLS.COM](mailto:CHRISTY.BENNETT@BENTLEYMILLS.COM)



**TREY HUSSEY**  
SOUTH CAROLINA

864.230.5534  
[TREY.HUSSEY@BENTLEYMILLS.COM](mailto:TREY.HUSSEY@BENTLEYMILLS.COM)

# BEST TILE®

who we are

Best Tile is a leading tile distributor on the East Coast with over 65 years in the industry and 26 showroom locations. We partner with leading factories around the world to bring you various beautiful tiles for all of your commercial projects. We have a family oriented culture and service first business philosophy.

meet your reps

NC East

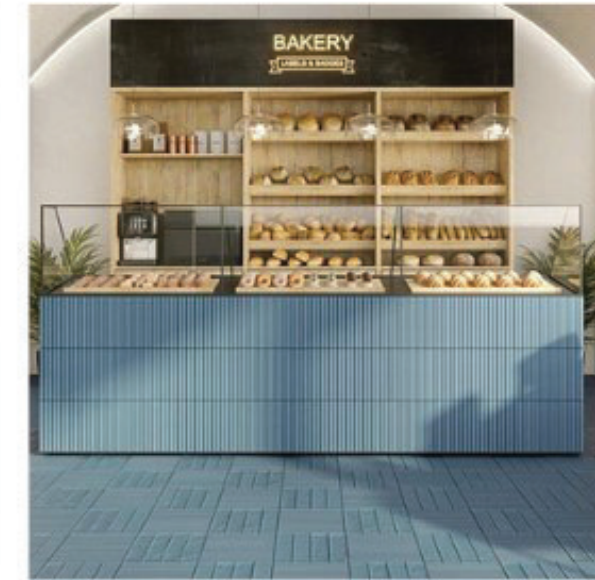
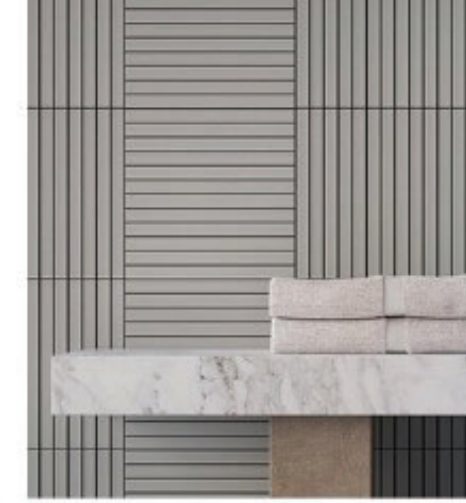


Nancy Peters  
919-986-6256  
npeters@besttile.com

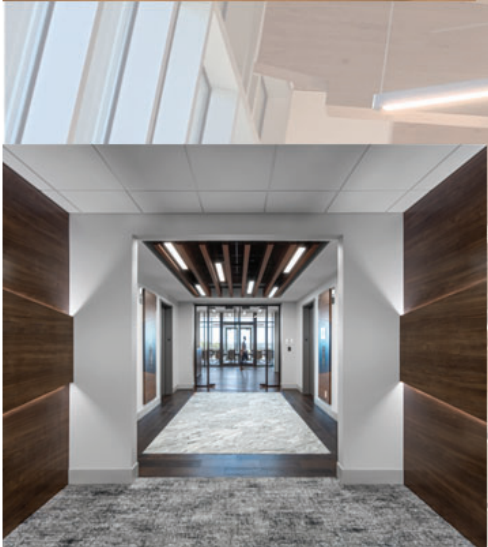
NC West & SC



Laresa Fahey  
980-275-1496  
lfahey@besttile.com

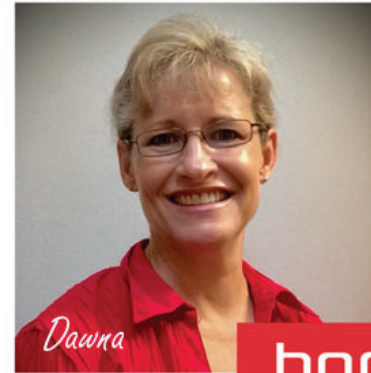


## *Bringing your designs to Light*



At Bodwell we prioritize building strong relationships, acting with integrity, and enjoying the process as we transform designs from concept to completion. Since 1990, we have committed ourselves to being a vital resource to the designers in the Charlotte and Western NC area for lighting and lighting controls. Serving as a bridge between upwards of 100 lighting fixture manufacturers and the design and construction community, we take pride in our deep understanding of project needs and our solution-oriented approach. Our team is composed of talented individuals with diverse backgrounds in design, engineering, architecture, construction, and business, equipping us with the expertise needed to keep creativity and design intent at the forefront while making sure the performance, budget and project timelines are consistently met.

## *Connect with us...*



*Dawna*



*Steph*



*Heather*



*Kenny*

**Dawna Carothers**  
dcarothers@bodwellassociates.com

**Stephanie Rondeau**  
steph@bodwellassociates.com

**Heather La Vigne**  
hlavigne@bodwellassociates.com

**Kenny DeStefani**  
kdestefani@bodwellassociates.com



**bodwell**





# COSENTINO®

Meaningful Design to Inspire People's Lives



## UKIYO COLLECTION

COUNTERTOP - REM | CLADDING - REM UKIYO GV2 | FLOORING - TK06 MARMORIO

## DEKTON®



## LE CHIC BOHÈME COLLECTION

BAR TOP - JARDIN EMERALD | BAR CLADDING - JARDIN EMERALD UKIYO GV3

## silestone<sup>®</sup>XM

Crossville  
Studios





Built for Speed, Powered by Service, Driven by Style  
 DSCGroup would like to thank IIDA Carolinas for the all the support of our brands!  
*John Cronin*



SoftGrid®



Delta Drop®



Vapor® Graphic Perf® Adaptive



Arborisa™ Denza

**Award-Winning Innovation**

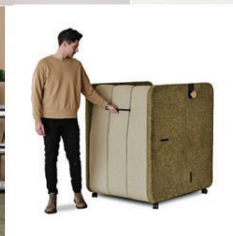
Ultraleather, the flagship collection of Ultrafabrics for the past 25 years, has won the Interior Design HIP Award 2024 as an Iconic Product!

Building on this legacy, Volar Bio, our innovative biobased collection, has won both the HIP Environmental Impact Award and a MetropolisLikes Award in the textile category.

HP METROPOLIS LIKES 2024

HP METROPOLIS LIKES 2024

TRIAD W C



# stylex

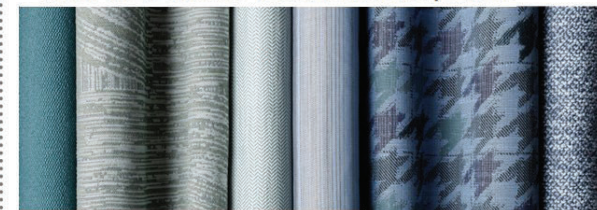
Ambi

"Ambi" from ambiance, reflects its capacity to shape moods within a space. Featuring soft privacy panels and technology to enable virtual calls, presentations, and dining, Ambi meets demands of hybrid workspaces. Available for shipment Q1 2025.



## LUUM

Twist on a Classic Collection: May 2024



LUUM Good Vibrations Collection 01 — 2024



Best of NeoCon 2024

Gold

## Stylex Verve Bucket



DECCA CONTRACT

## CLOAK CASEGOOD



DSCGroup



John Cronin

704-775-2789

john@dscgroupus.com

designsourcecarolinas.com N&S Carolina, Tennessee, Bermuda



Creation

GuidePoint



**NEW! Mipolam Planet**

The Original Mipolam since 1937:  
Built on 80+ years of expertise, it's  
still the most durable in its class with  
a life expectancy of over 20 years.



**Keith Wall**

Territory Sales Manager  
North & South Carolina  
704-530-3219  
keith.wall@gerflorusa.com



EXPERTS IN DEFINING GLASS WALLS.

# The INFINIUM Way

PEOPLE. PRODUCT. PROCESS.

These three little words separate us from the rest. Pride in our work.  
Pride in the materials we use. Pride in the way we treat our customers.

*DIRECT MODEL | TURNKEY SOLUTION | 4-6 WEEK LEAD TIME | MADE IN THE USA*



**ALEX HALIBEJ**  
Urban Office  
Sales Rep



**COLIN SCHMITZ**  
INFINIUM Walls  
Regional Sales Manager



**INFINIUM QUANTUM SINGLE BUTT-GLAZED.**

Interface®

Earthen Forms™



BROWSE IMAGES  
ORDER SAMPLES

Knitstitch™



BROWSE IMAGES  
ORDER SAMPLES

norament® arago™



BROWSE IMAGES  
ORDER SAMPLES

MADE FOR MORE™

Meet the Team



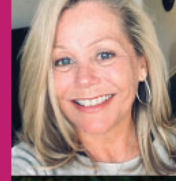
**BETH BAKER**  
Western NC/ Upstate SC  
beth.schultz@interface.com



**CAROLE ALLEN**  
Western NC/ Upstate SC  
carole.maret@interface.com



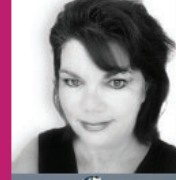
**CHRIS GALINETTI**  
Western NC  
chris.galinetti@interface.com



**KAY JACKSON**  
Eastern NC  
kay.jackson@interface.com



**DINA KHALEK**  
Eastern NC  
dina.khalek@interface.com



**SUSAN ROSS**  
Eastern NC  
susan.ross@interface.com



**JANYE WILKINS**  
Southern SC  
jayne.wilkins@interface.com

Interface®



More than just a pretty face.

Flooring made for more inspiration, more climate progress, more performance, and more ways for you to create remarkably good spaces. It's flooring—and then some.

Discover more.  
[interface.com/madeformore](https://interface.com/madeformore)





JACK FETNER ASSOCIATES INC



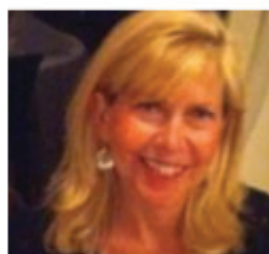
Jack Fetner  
High Point NC  
jack@jackfetnerassociates.com  
336-210-7522



Jackson Fetner  
Raleigh NC, Eastern NC  
jackson@jackfetnerassociates.com  
336-847-2007



John Skipper  
Charlotte, Asheville  
South Carolina  
john@jackfetnerassociates.com  
704-906-7625



Arden Gurney, IIDA, NCIDQ  
High Point NC  
arden@jackfetnerassociates.com  
336-210-8257

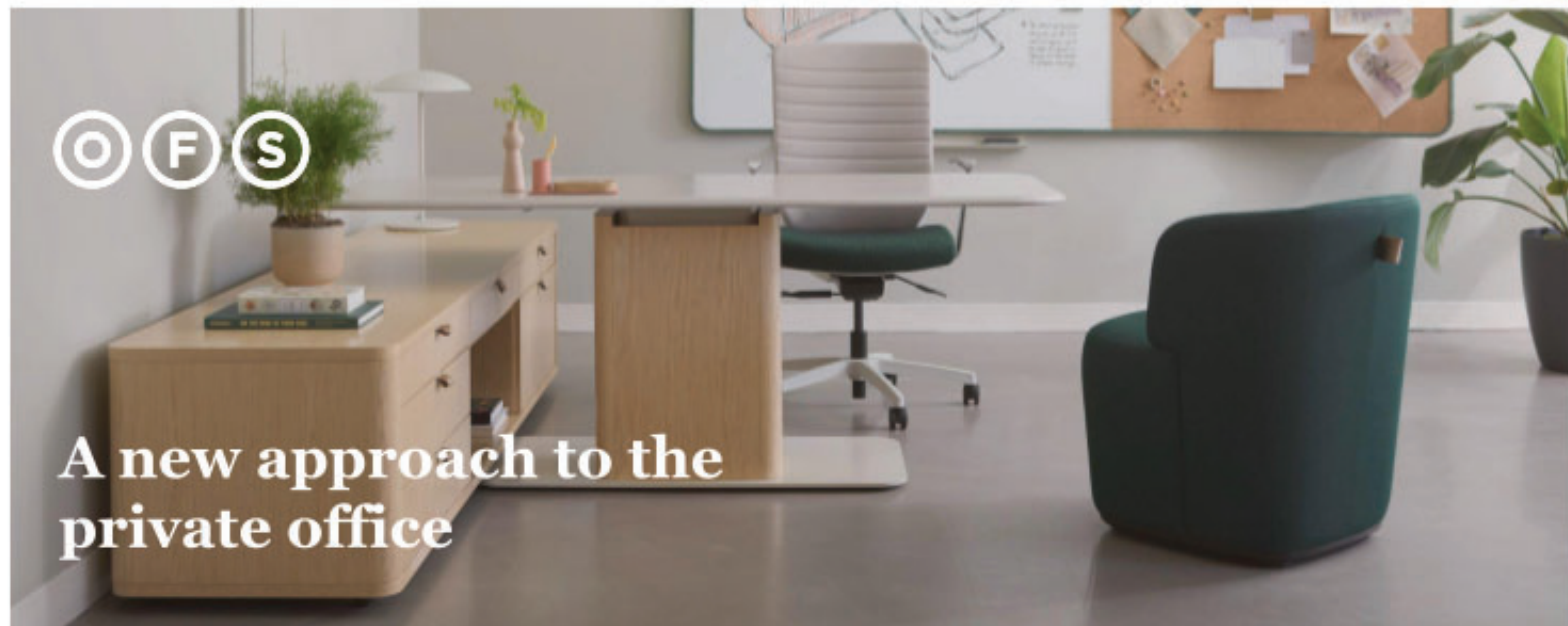


Kathryn Robinson  
Southern Virginia  
kathryn@jackfetnerassociates.com  
804-405-3095

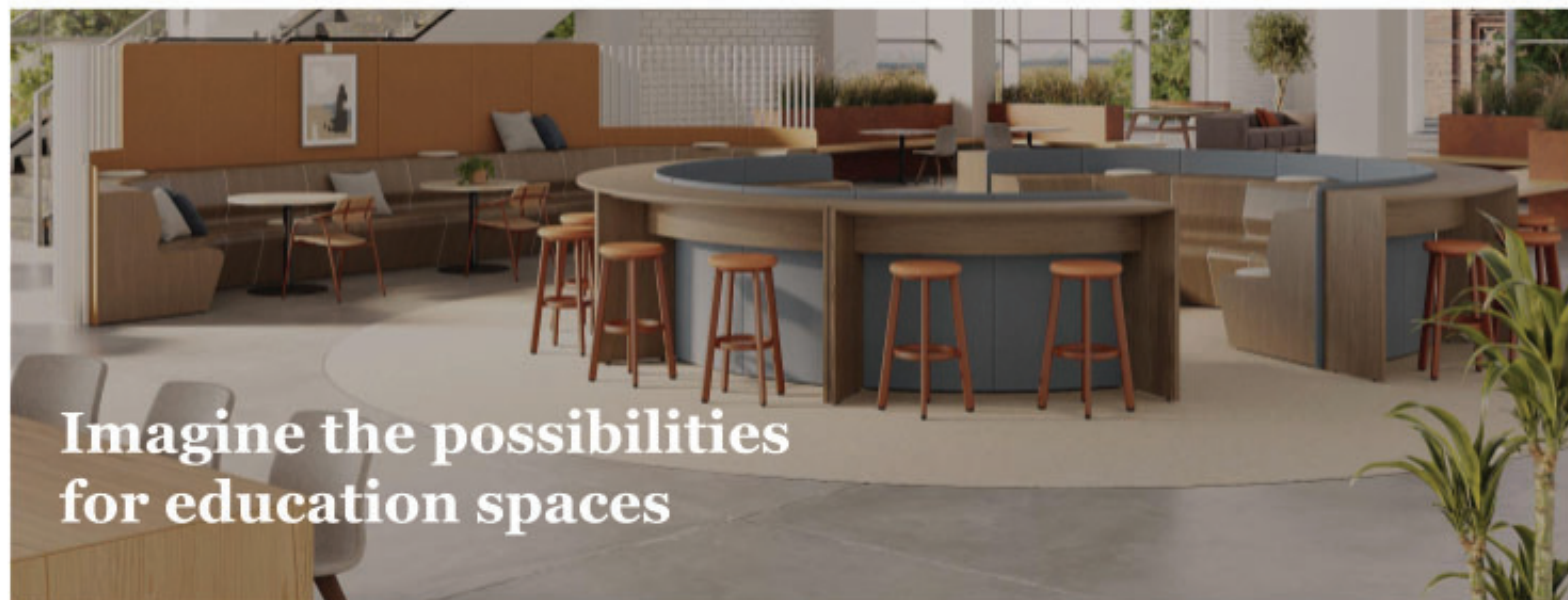


carolina  
an OFS company

R O  
O M



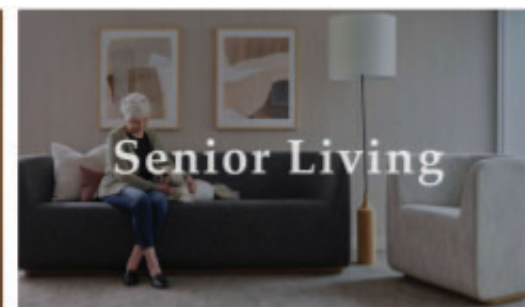
A new approach to the private office



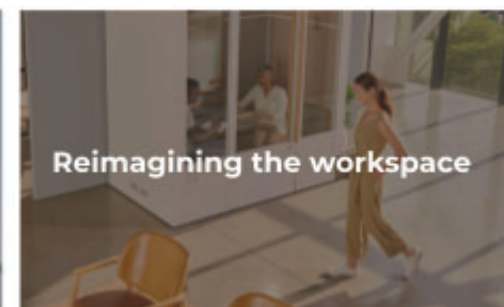
Imagine the possibilities for education spaces



Healthcare



Senior Living



Reimagining the workspace

# MDC INTERIOR SOLUTIONS

## SINGLE SOURCE TOTAL SOLUTION

MDC is dedicated to providing personalized solutions that cater to your unique needs from the start of a project to tenant occupancy. Our nationwide service is not only backed by a team of product knowledge experts but also enhanced by dedicated Account Executives who are here to offer you personalized service, aiming to save you billable hours by ensuring support no matter where your project is located. We offer competitive pricing programs, making high-quality interior solutions more accessible.

Our Single Source Portfolio encompasses everything from leading-edge design finishes to acoustic performance materials, enabling the creation of functional spaces with both aesthetics and performance in mind. In addition, MDC extends comprehensive support for the products we carry, including detailed installation guides, AutoCAD and Revit files, project management, and technical support to facilitate seamless project execution. As your complete solution for every interior need, our commitment is to provide you with the support and resources you need at every step of the way, ensuring your projects are completed efficiently and to the highest standard.



**KATIE CHAMBERS**  
ACCOUNT EXECUTIVE

MDCWALL.COM



- WALLCOVERINGS
- WALL PROTECTION
- ACOUSTIC SOLUTIONS
- DIGITAL PRINTING CAPABILITIES
- ARCHITECTURAL PANELS
- COLLABORATIVE SURFACES
- PAINTS & FINISHES
- MIRRORS & DECOR
- CURATED ART
- WINDOW SHADES

MDCWALL.COM



www.mechoshade.com



Iowa State University, Stark Performance Center

THE INDUSTRY'S FIRST TO OFFER

# EPDs ON ALL SHADE CLOTHS AND MANUAL SHADING SYSTEMS

## ECOGLASS® 100% GLASS YARN SHADE CLOTH

Since 1969, Mecho has led in innovative, durable shading solutions. We provide high-quality solar protection with a focus on sustainability and daylighting. Through constant innovation, we deliver tailored, sustainable shading systems for diverse industries.



EcoGlass Sustainability Shade Cloth



Visit the EcoGlass webpage for more details.

Read our EPD blog to learn more.



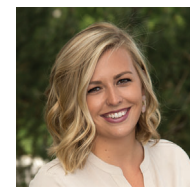
Committed to sustainability.



Visit our sustainability webpage



### CONTACT YOUR CAROLINAS TEAM:



**Whitlie Nock**  
Business Development Manager  
whitlie.nock@springswindowfashions.com



**Jordan Yeakey**  
Territory Manager  
jordan.yeakey@springswindowfashions.com



MOMENTUM  
TEXTILES & WALLCOVERING





MRG SOUTHEAST / CONTRACT INTERIORS



[www.mrgse.com](http://www.mrgse.com)





CELEBRATING  
**75**  
YEARS IN BUSINESS

We opened our doors in 1950 and continue to be a family owned and operated business. We started in marine and yacht design and now serve the contract market with a focus on the Healthcare, Higher Ed, Hospitality and Workplace sectors.

*What's*  
**New**



Alcott



Aire Muse



Masiala



Odyssey

500K+ YARDS OF STOCK

INDOOR/OUTDOOR UPHOLSTERY

IMMEDIATE SHIPMENTS

6004 BONACKER DRIVE. TAMPA, FL 33610

**CALL US +1 813.621.6021**

**Reliatex, inc.**  
"your reliable textile source"



Local Rep:  
Carla Andriano  
NC/SC Senior Account Executive  
860.324.0407  
carla.andriano@reliatex.com



www.reliatex.com

Healthcare Higher Education Hospitality Workplace Marine

**ROPPE.**

**Proven. Flooring. Experiences.**

**SHERWIN  
WILLIAMS®**

# Spec & color expertise. At your service.

## Schedule a Consultation:



**Steve Goode**  
Architectural Account Executive -  
Carolinas  
Steven.r.goode@sherwin.com  
(980)-207-9410



**Katrina Partee**  
Architectural Account Executive -  
Greenville, SC and Georgia  
katrina.d.partee@sherwin.com  
(404) 323-2263

Sherwin-Williams is your one partner for every project, simplifying the specification process by offering a comprehensive range of coatings for every type of product from start to finishes. Explore our complete portfolio of products, resources, and more.





Smith & Stevenson

Karen Agnello, IIDA  
A&D Specialist  
kagnello@smithandstevenson.com



Sloan® Mirrors  
The perfect reflection of your design.



Sloan Mirrors!



Sloan

BRIZO



ALLARIA™  
BATH COLLECTION

*A work of rare alchemy.*



CHARLOTTE®  
BATH COLLECTION

*Artful indulgence.*



LEVOIR®  
BATH COLLECTION

*A thrilling intrigue.*



VELUM™ BATH COLLECTION

DELTA  
see what Delta can do™



Smith & Stevenson



DARRAN®

scan QR code for all products

# TCG

## The Contract Group

*Contract Furniture Representatives*



Skip Dunaway / Sales



fion



six-t occasional



six-t conference



liaison



abacus



plus modular



teo



plus



heartfelt



uplift



daydream



spool

tilebar





# C DESIGN

Architecture | Interiors | Planning



CHECK US OUT HERE



2020 FIRM OF THE YEAR

## OUR INTERIORS TEAM:



Alison Volckens  
NCIDQ, RID, IIDA VP of Advocacy  
Workplace Market Leader  
Principle Associate



Emily Reichenbach  
NCIDQ, IIDA  
Interior Designer



Bailey Brown  
Interior Project Designer



Jordan Efrid  
Assoc. IIDA  
Interior Project Designer



Rebecca Karban  
Assoc. IIDA  
Interior Project Designer



# Gensler



GENSLER CHARLOTTE



2151 HAWKINS ST | CHARLOTTE, NC



ALLSPRING | CHARLOTTE, NC



ONE SOUTH AMENITY SPACE | CHARLOTTE, NC



CBI COMMUNITY WALL | CHARLOTTE, NC

**AGRIS** 50 **YEARS**

1974 - 2024



Embracing the mantra, "The only way to do great work is to love what you do" by Steve Jobs, Michelle's passion is evident in every project undertaken. Founded on the principle that every detail matters, irrespective of size, Lambert Design Group places a strong emphasis on organization and meticulous attention to detail. This meticulous approach ensures a seamless design process from inception to completion, epitomizing the essence of excellence in interior design.

I'm your strongest advocate, dedicated to delivering a custom design that's tailored to your needs and goals. Throughout your project, I'll provide you with focused, one-on-one attention every step of the way. My mission is to make the design and construction process enjoyable, addressing any concerns that arise. Should challenges occur, I'll work with you to problem-solve and guide the project to a successful completion.

**LDG**  
lambert design group



**Michelle Lambert** IIDA, NCIDQ  
Owner/Interior Designer  
NC Registered Interior Designer  
p: 336-971-2251  
e: michelle@lambertdg.com  
www.lambertdg.com



# IIDA Carolinas Board Members at LS3P



**Chelsea Lawrence**  
PAST PRESIDENT



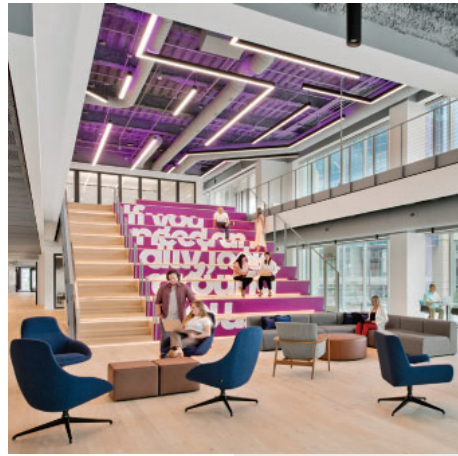
**Beth Florence**  
ADVISOR TO THE BOARD



**Marissa Deters**  
CHARLOTTE CO-CITY CHAIR



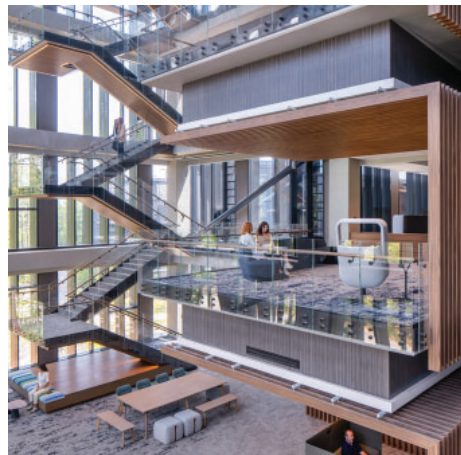
**Brianna Faris**  
UPSTATE CO-CITY CHAIR



## transforming communities across the **Southeast**

- CHARLESTON    GREENSBORO
- COLUMBIA    RALEIGH
- GREENVILLE    WILMINGTON
- MYRTLE BEACH    ATLANTA
- ASHEVILLE    SAVANNAH
- CHARLOTTE    JACKSONVILLE

LEARN MORE AT [LS3P.COM](http://LS3P.COM)





Our firm is a leading facility planning and architectural design firm focused on providing our clients with passionate representation, creative talent and progressive design.

## Meet the design team!



**Alicia Hardin, NCIDQ, IIDA**  
Principal Designer, Partner



**Peter Marsh, LEED AP**  
Principal Project Manager, Partner



**Paul Meyer, NCARB, AIA**  
Principal Architect, Partner



**Kristin Holligsworth, NCIDQ, NCRID, LEED AP, IIDA**  
Interior Studios Director, Partner



**Paige Malloy, NCIDQ, IIDA**  
Interior Designer



**Navi Cheab, Assoc. IIDA**  
Interior Design Intern

Design is planning with a purpose.

Scan to learn more!



Scan to connect with us!



NAIOP NC  
2023 INDUSTRIAL PROJECT OF THE YEAR



**Second Harvest Food Bank | Winston-Salem, NC**  
Industrial, Non-Profit, Office, Warehouse

NAIOP NC  
2023 BEST PROJECT OF THE YEAR  
RUNNER-UP

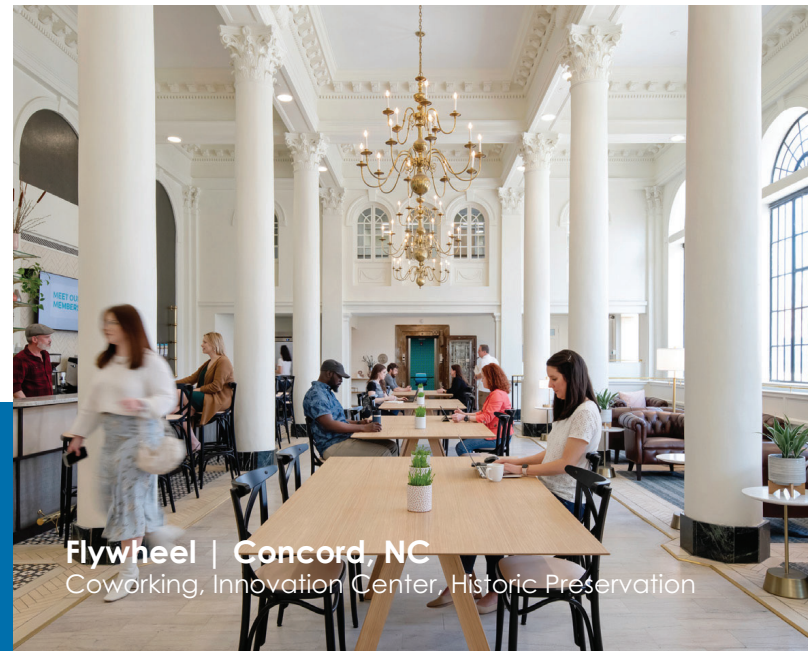


**Inmar HQ | Winston-Salem**  
Office, Sustainable Design



**Flywheel-Crescent One | Greenville, SC**  
Coworking, Innovation Center, Historic Preservation

TRIAD BUSINESS JOURNAL  
2024 CRE BEST PROJECT FINALIST



**Flywheel | Concord, NC**  
Coworking, Innovation Center, Historic Preservation



**Senior Services Intergenerational Center for Arts & Wellness | Winston-Salem, NC**  
Adult Day Center, Education, Healthcare, Nonprofit, Office

CHARLOTTE

COASTAL

COLUMBIA

TRIAD

TRIANGLE

UPSTATE